

Regardless of what leaves laboratory staff hot or cold, precise and constant temperature regulation is a basic prerequisite for successful applications in day-to-day laboratory practice. IKA strives to make your work with circulation and immersion thermostats or bridge and heating bath thermostats as pleasant and successful as possible. Our broad range of DIN 12876-compliant devices is designed for temperatures from -30 to 250 °C and meets the highest requirements of precision, safety, output and intelligence.

## RECIRCULATING CHILLER RC 2 GREEN

/// Plant 163 trees or choose the RC 2 GREEN

Brilliant energy-efficiency, CO<sub>2</sub> savings from the very first hour of operation and a reduction in operating costs: The new RC 2 GREEN recirculating chiller combines a natural coolant with tried and tested demand-controlled compressor technology.

### ENVIRONMENTALLY-FRIENDLY COOLANT

The coolant R 290 is classed as a pure hydrocarbon. It is friendly to the ozone layer and has only a slight greenhouse potential. In addition, it has excellent thermodynamic properties and promises a long service life for the recirculating chiller, even under future utilization requirements.

### LOWER OPERATING COSTS

In combination with the demand-controlled compressor in the RC 2 GREEN, the environmentally-friendly refrigerant achieves a cooling capacity of 800 watts and a minimum temperature of -30 °C. Not only is this good for the environment, but, extrapolated over ten years, the costs also decrease by 150 to 250 Euros per year of operation. In addition, the RC 2 GREEN saves 30% in installation space and half of the device volume compared with equivalent competitor devices.

### FULL POWER

Furthermore, the RC 2 GREEN offers everything one would expect to see in a reliable recirculating chiller: a powerful pressure and suction pump, a high-quality fine-mesh stainless steel filter and, of course, the typical IKA modern and user-friendly design, incorporating intuitive menu navigation. The display on the control variant can be removed. This permits straightforward remote operation, freeing up space immediately around the working environment for additional essential laboratory equipment.



## ICC basic

Ident. No. 0004134400



## ICC control

Ident. No. 0004136600



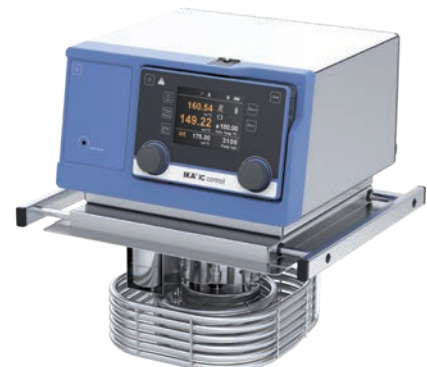
## IC basic

Ident. No. 0003861000



## IC control

Ident. No. 0003863000\*\*\*



TECHNICAL DATA	ICC BASIC	ICC CONTROL	IC BASIC	IC CONTROL
Appliance type	Compact immersion circulator	Compact immersion circulator	Immersion circulator	Immersion circulator
Heat output (230 / 115 V)	2000 / 1000 W	2000 / 1000 W	2500 / 1250 W	2500 / 1250 W
Temperature range	RT +10 °C* – 150 °C	RT +10 °C* – 150 °C	RT +10 °C – 250 °C**	RT +10 °C – 250 °C**
Display	LED	TFT	LED	TFT (wireless)
Temperature stability DIN 12876	± 0.02 K	± 0.01 K	± 0.02 K	± 0.01 K
Max. flow rate	18 l/min	18 l/min	31 l/min	31 l/min
Max. pump pressure	0.3 bar	0.3 bar	0.61 bar	0.61 bar
Min. suction pressure	0.2 bar	0.2 bar	0.45 bar	0.45 bar
Dimensions (W x H x D)	145 x 340 x 200 mm	145 x 340 x 200 mm	285 x 313 x 291 mm	285 x 313 x 291 mm

\* Possible operating temperatures with cooling coil: -20 °C to 150 °C

\*\* Possible operating temperatures with cooling coil: -20 °C to 250 °C

\*\*\* CC 1 cooling coil included in delivery



ICC basic eco 8



ICC control pro 12

Product	Description	Bath size	Bath opening (W x D)***	Ident. No.
<b>HEATING BATH CIRCULATORS</b>				
ICC basic eco* 8	Package ICC basic, 8 l eco bath	S	188 x 105 mm	0008034900
ICC basic pro** 9	Package ICC basic, 9 l pro bath	S	195 x 100 mm	0008035100
ICC basic pro 12	Package ICC basic, 12 l pro bath	M	255 x 127 mm	0010000414
ICC basic eco 18	Package ICC basic, 18 l eco bath	L	245 x 305 mm	0008035000
ICC basic pro 20	Package ICC basic, 20 l pro bath	L	255 x 309 mm	0008035200
ICC control eco 8	Package ICC control, 8 l eco bath	S	188 x 105 mm	0008035300
ICC control pro 9	Package ICC control, 9 l pro bath	S	195 x 100 mm	0008035500
ICC control pro 12	Package ICC control, 12 l pro bath	M	255 x 127 mm	0010000415
ICC control eco 18	Package ICC control, 18 l eco bath	L	245 x 305 mm	0008035400
ICC control pro 20	Package ICC control, 20 l pro bath	L	255 x 309 mm	0008035600
<b>COMBINED HEATING BATH CIRCULATORS</b>				
ICC basic eco 8 c	Package ICC basic, 8 l eco bath, cover	S	188 x 105 mm	0008035700
ICC basic pro 9 c	Package ICC basic, 9 l pro bath, cover	S	195 x 100 mm	0008035900
ICC basic pro 12 c	Package ICC basic, 12 l pro bath, cover	M	255 x 127 mm	0010000416
ICC basic eco 18 c	Package ICC basic, 18 l eco bath, cover	L	245 x 305 mm	0008035800
ICC basic pro 20 c	Package ICC basic, 20 l pro bath, cover	L	255 x 309 mm	0008036000
ICC control eco 8 c	Package ICC control, 8 l eco bath, cover	S	188 x 105 mm	0008036100
ICC control pro 9 c	Package ICC control, 9 l pro bath, cover	S	195 x 100 mm	0008036300
ICC control eco 18 c	Package ICC control, 18 l eco bath, cover	L	245 x 305 mm	0008036200
ICC control pro 12 c	Package ICC control, 12 l pro bath, cover	M	255 x 127 mm	0010000417
ICC control pro 20 c	Package ICC control, 20 l pro bath, cover	L	255 x 309 mm	0008036400
<b>PACKAGES WITH MAGNETIC STIRRER</b>				
ICC basic IB R RO 15 eco	Package ICC basic with magnetic stirrer RO 15 and bath	L	317 x 492 mm	0010002471
ICC control IB R RO 15 eco	Package ICC control with magnetic stirrer RO 15 and bath	L	317 x 492 mm	0010002474
ICC basic IB R RO 15 pro	Package ICC basic with magnetic stirrer RO 15 and bath	L	317 x 492 mm	0010006740
ICC control IB R RO 15 pro	Package ICC control with magnetic stirrer RO 15 and bath	L	317 x 492 mm	0010006736

\* eco: plastic bath

\*\* pro: stainless steel bath

\*\*\* Size of plate that can be placed at the bottom of the bath



ICC control pro 20 c



ICC basic IB R RO 15 eco  
(Circulating bath with 15 stirring positions  
for glass beakers up to 250 ml)



IC control pro 20 c



ICC control IB R RO 15 pro

Product	Description	Bath size	Bath opening (W x D)**	Ident. No.
<b>IMMERSION CIRCULATOR PACKAGES</b>				
IC basic pro 12 c	Package IC basic, 12 l pro bath, cover	M	255 x 80 mm	0008039900
IC basic pro 20 c	Package IC basic, 20 l pro bath, cover	L	255 x 262 mm	0008036800
IC control pro 12 c	Package IC control, 20 l pro bath, cover	M	255 x 80 mm	0008040000
IC control pro 20 c	Package IC control, 12 l pro bath, cover	L	255 x 262 mm	0008037200

\*\*\* Size of plate that can be placed at the bottom of the bath

## /// Heating Bath Circulators

## ① HBC 5 basic

Ident. No. 0004125000

①

## ② HBC 5 control

Ident. No. 0004127000



## ① HBC 10 basic

Ident. No. 0004135000

## ② HBC 10 control

Ident. No. 0004137000

②



## /// Refrigerated and Heating Bath Circulators

## ① CBC 5 basic

Ident. No. 0020015225

①

## ② CBC 5 control

Ident. No. 0020015224



## ① HRC 2 basic

Ident. No. 0025003742

## ② HRC 2 control

Ident. No. 0025004524

②



TECHNICAL DATA	HBC 5 BASIC   CONTROL	HBC 10 BASIC   CONTROL	CBC 5 BASIC   CONTROL	HRC 2 BASIC   CONTROL
Appliance type	Heated bath circulator	Heated bath circulator	Refrigerated and heating bath circulator	Refrigerated and heating bath circulator
Heater capacity (230 / 115 V)	2500 / 1250 W	2500 / 1250 W	2500 / 1250 W	1500 / 1200 W
Temperature range	RT + 10 °C* – 250 °C	RT + 10 °C* – 250 °C	-25 °C – 200 °C	-20 °C – 100 °C   -30 °C** – 100 °C
Cooling capacity at 20 °C	–	–	350 W	400 W
Display	LED   TFT (wireless)	LED   TFT (wireless)	LED   TFT (wireless)	LED   TFT (wireless)
Temperature stability DIN 12876	± 0.02 K   ± 0.01 K	± 0.02 K   ± 0.01 K	± 0.02 K   ± 0.01 K	± 0.1 K   ± 0.05 K
Max. flow rate	31 l/min	31 l/min	31 l/min	21 l/min
Max. pump pressure	0.61 bar	0.61 bar	0.61 bar	0.5 bar
Min. suction pressure	0.45 bar	0.45 bar	0.45 bar	0.25 bar
Dimensions (W x H x D)	275 x 406 x 500 mm	275 x 456 x 500 mm   275 x 456 x 506 mm	275 x 690 x 490 mm	220 x 475 x 525 mm

\* Possible operating temperatures with cooling coil: -20 °C to 250 °C

\*\* -30 °C possible at 2000 rpm



### ① RC 2 basic

Ident. No. 0020015693

### ② RC 2 control

Ident. No. 0020015694

①



BESTSELLER

### ① RC 2 GREEN basic

Ident. No. 0025007421

### ② RC 2 GREEN control

Ident. No. 0025007422

②



NEW!



### RC 5 basic

Ident. No. 0020019125



### RC 5 control

Ident. No. 0020019126



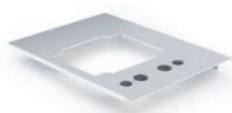
TECHNICAL DATA	RC 2 BASIC   CONTROL	RC 2 GREEN BASIC   CONTROL	RC 5 BASIC   CONTROL
Appliance type	Recirculating chiller	Recirculating chiller	Recirculating chiller
Cooling capacity at 20 °C	400 W	800 W	1400 W
Temperature range	-20 °C – RT   -30 °C – RT	-30 °C – RT	-30 °C – RT
Display	LED   TFT (wireless)	LED   TFT (wireless)	LED   TFT (wireless)
Temperature stability DIN 12876	± 0.1 K   ± 0.05 K	± 0.15 K	± 0.2 K   ± 0.1 K
Max. flow rate	18 l/min	21 l/min	31 l/min
Max. pump pressure	0.3 bar	0.5 bar	0.61 bar
Min. suction pressure	0.2 bar	0.25 bar	0.45 bar
Dimensions (W × H × D)	220 × 475 × 525 mm	220 × 475 × 525 mm	310 × 546 × 490 mm



CS.ICC



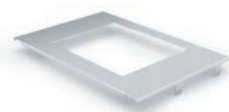
CL.ICC



BS.ICC



PCS.ICC



BS.IC



CC1



IB R 9 eco



IB 18 eco



IB 9 pro



IB 20 pro

Product	Description	Ident. No.
<b>ACCESSORIES FOR ICC</b>		
CS.ICC	Cover, small for ICC, 8 / 9 l bath vessels	0004471500
CM.ICC	Cover, medium for ICC, 12 l bath vessels	0025000290
CL.ICC	Cover, big for ICC, 18 / 20 l bath vessels	0004471600
CLG.ICC	Gable lid for ICC, bath size L	0020023680
CLR.ICC	Cover with 6 ring openings for ICC, 18/20 l bath vessels	0025006276
BS.ICC	Bridge, small for ICC, 8 / 9 l bath vessels	0020003077
BL.ICC	Bridge, big for ICC, 18 / 20 l bath vessels	0020003078
CC2	Cooling coil for ICC	0025001061
PCS.ICC	Pump connection set for ICC	0004471900

#### ACCESSORIES FOR IC

CM.IC	Cover, medium for IC, 12 l bath vessels	0004577600
CL.IC	Cover, big for IC, 18 / 20 l bath vessels	0004471800
BS.IC	Bridge, small for IC, 12 / 18 / 20 l bath vessels	0004472800
CC1	Cooling coil for IC basic / control	0020005116

#### BATH VESSELS

##### Bath size S

IB 8 eco	Bath vessel, plastic, 8 l	0004248100
IB R 9 eco	Bath vessel, plastic, 9 l, rectangular	0020004382
IB 9 pro	Bath vessel, stainless steel, 9 l	0004248500

##### Bath size M

IB 12 pro	Bath vessel, stainless steel, 12 l	0004577500
-----------	------------------------------------	------------

##### Bath size L

IB 18 eco	Bath vessel, plastic, 18 l	0004248200
IB HF 24 eco	Bath vessel, plastic, 24 l	0020006884
IB R 20 eco	Bath vessel, 20 l, plastic, rectangular	0020004383
IB R 52 eco	Bath vessel, 52 l, plastic, rectangular	0020007044
IB R RO 15 eco	Bath vessel for magn. stirrer RO 15	0020006341
IB R RO 15 pro	Bath vessel for magn. stirrer RO 15	0025007761
IB 20 pro	Bath vessel, stainless steel, 20 l	0004248600



HF.Si.20.200.50

Product	Description	Ident. No.
<b>THERMOFLUIDS</b>		
HF.Si.20.250.50A	Heating fluid Si250A; 10 kg	0020003521
HF.Si.20.200.50	Heating fluid Si200; 10 kg	0020003520
UF.Si.N30.150.10LV	Universal fluid Si150 LV; 9 kg	0020003518

**HOSES**

LT 5.20



H.SI.8

LT 5.20	High temperature hose kit insulated, 2 x 1.5 m, stainless steel	0002606700
LT 5.21	High temperature hose kit insulated, 2 x 1.5 m, PTFE	0020000988
H.PVC.8	Hose, PVC, Ø 8 mm, 2 x 1.5 m	0004568800
H.PVC.12	Hose, PVC, Ø 12 mm, 2 x 1.5 m	0004568900
H.SI.6	Hose, silicone, Ø 6 mm, 3 m	0020102324
H.SI.8	Hose, silicone, Ø 8 mm, 2 x 1.5 m	0004569000
H.SI.12	Hose, silicone, Ø 12 mm, 2 x 1.5 m	0004569100
H.PUR.8.R	Tube PUR 90 °C, Ø 8, 2 x 1.5 m, reinforced	0020004612
H.PUR.12	Tube PUR 90 °C, Ø 12, 2 x 1.5 m	0020004613
H.FKM.8	Tube FKM, Ø 8 mm, -30 – 180 °C, 2 x 1.5 m	0004569200
H.FKM.12	Tube FKM, Ø 12 mm, -30 – 180 °C, 2 x 1.5 m, M 16 x 1	0004569300

**INSULATION FOR HOSES**

ISO.8



ISO.12

ISO.8	Insulation, Ø 8 mm, 2 x 1.5 m	0004569400
ISO.12	Insulation, Ø 12 mm, 2 x 1.5 m	0004569500

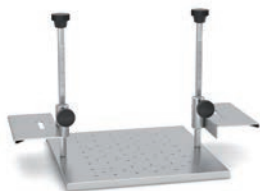




Tube rack, 13 mm, S,  
stainless



Variable rack, ICC, ML,  
stainless



Variable bottom, ICC,  
L, stainless



Bottom plate L



Floating tube rack 1



Floating globes,  
PP



WH10

Product	Description	Ident. No.
<b>TUBE RACKS</b>		
Tube rack, 13 mm, S, stainless	Stainless steel rack for bath size S, Ø 13 mm	0020004026
Tube rack, 17 mm, S, stainless	Stainless steel rack for bath size S, Ø 17 mm	0020004027
Tube rack, 22 mm, S, stainless	Stainless steel rack for bath size S, Ø 22 mm	0020004028
Tube rack, 13 mm, ML, stainless	Stainless steel rack for bath size M+L, Ø 13 mm	0020004029
Tube rack, 17 mm, ML, stainless	Stainless steel rack for bath size M+L, Ø 17 mm	0020004030
Tube rack, 22 mm, ML, stainless	Stainless steel rack for bath size M+L, Ø 22 mm	0020004031
Variable rack, ICC, ML, stainless	Variable rack for bath size M+L.ICC	0020004032
Inlay 1, variable rack, ICC, ML	Inlay for variable rack, Ø 13 mm, 2 pcs.	0020004033
Inlay 2, variable rack, ICC, ML	Inlay for variable rack, Ø 17 mm, 2 pcs.	0020004034
Inlay 3, variable rack, ICC, ML	Inlay for variable rack, Ø 22 mm, 2 pcs.	0020004035
Variable bottom, ICC, L, stainless	Variable bottom for bath size L.ICC	0020004614
Bottom plate L	Bottom plate for bath size L	0020006212
Bottom plate L, ICC	Bottom plate for bath size L.ICC	0020007353
<b>FLOATING RACKS</b>		
Floating tube rack 1	Floating tube rack for 24 × 1.5 / 2.0 ml tubes, 5 pcs.	0020003667
Floating tube rack 2	Floating tube rack for 8 × 15 ml tubes, 5 pcs.	0020003668
Floating tube rack 3	Floating tube rack for 4 × 50 ml tubes, 5 pcs.	0020003669
<b>ADDITIONAL ACCESSORIES</b>		
WH10	WiCo Holder	0020000984
PT 100.30	Temp. sensor, stn. steel	0004284700
PT 100 extension (Lemo)	Extension cable PT 100, lemo connector, 3 m	0020004629
Floating globes, PP	Floating globes, PP, 500 pcs.	0020003666
Distribution Pipe	4-sided distributor tube for improved flow in large tanks, stainless steel	0020027440
PDS.IB.R.RO	Pump connection set ICC for IB R RO baths, incl. distribution pipe	0020026449



CO V 1

Ball valve M16x1

Mechanic fluid  
level controller

Product	Description	Ident. No.
<b>VALVES AND LEVEL CONTROLLERS</b>		
MV 1	Magnetic valve for cooling water control, max. 100 °C	0020003763
CO V 1	Closed pressure valve for external pump connection set, max. 180 °C	0020000249
Ball valve M16 × 1	Ball valve, completely opening (M 16 × 1)	0020004620
Mechanic fluid level controller	Mechanic fluid level controller	0020004618

**ADAPTERS**

Elbow tube 90°	Elbow tube 90°	0025001212
Elbow Olive 90° for pump	90° tube adapter for pump mounting	0025007462
Y-hose connector 8 mm	Splitter, PP, max. 135 °C	0020010963
Olive for DN 6 hoses	Olive for DN 6 hoses, 2 pcs.	0020004667
Olive for DN 8 hoses	Olive for DN 8 hoses, 2 pcs.	0020004566
Olive for DN 10 hoses	Olive for DN 10 hoses, 2 pcs.	0020004568
Olive for DN 12 hoses	Olive for DN 12 hoses, 2 pcs.	0020004889
Adapter NPT 1/4	Adapter M 16 to NPT 1/4, 2 pcs.	0020004569
Adapter NPT 1/2	Adapter M 16 to NPT 1/2, 2 pcs.	0020004570
Adapter NPT 3/4	Adapter M 16 to NPT 3/4, 2 pcs.	0020004571
Adapter M16x1 f - G1/4 m	Adapter M 16 × 1 female to G 1/4 male	0020008807
Adapter M16x1 m - G1/4 m	Adapter M 16 × 1 male to G 1/4 male	0020008734
Adapter M16x1 m - G1/2 m	Adapter M 16 × 1 male to G 1/2 male	0020008796
Adapter M16x1 f - G1/2 m	Adapter M 16 × 1 female to G 1/2 male	0020008800
Adapter M16x1 f - G3/8 m	Adapter M 16 × 1 female to G 3/8 male	0020008730
Adapter M16x1 m - G3/8 m	Adapter M 16 × 1 male to G 3/8 male	0020008754
Adapter M16x1 m - M16x1 m	Adapter M 16 × 1 male to M 16 × 1 male, for hose extension	0025007118
Lock nut	Lock nut, 2 pcs.	0020004583
Stopper	Stopper, 2 pcs.	0020004584



Elbow tube 90°

Olive for DN 6  
hoses

Adapter NPT 1/4



Adapter NPT 3/4