

We believe you can make a laboratory classic even better. The magnetic stirrer was invented more than seven decades ago, but the world's best-selling stirrers have never been as strong, energy-efficient and durable as the modern IKA magnetic stirrers. We have developed devices for mixing tasks involving an extensive range of volumes and viscosities, with and without a heating function, and even for multiple syntheses in up to 36 vessels at the same time. One model even adapts to the optical preferences of its user.

## RCT 5 DIGITAL

/// The most powerful generation of magnetic stirrers



The new RCT 5 digital magnetic stirrer, with a heating power rating of 850 watts, now offers significantly more power making it an ideal device for demanding stirring tasks up to 20 l.

### INTELLIGENT SET-UP PLATE

The RCT 5 digital's set-up plate is made from white coated ceramic material, making it particularly resistant to chemicals. In addition, the shape is square, meaning that this modern magnetic stirrer provides even better space utilization for attachments and stirring vessels.

### MULTIFUNCTIONAL MENU

Whether determining the direction of rotation, timer functions or sequence programming - the stirring process can be programmed individually from beginning to end. In this way, the reaction runs reliably and safely even without monitoring.

### SIMPLE OPERATION

The intuitive multilingual IKA menu guide makes working with the RCT 5 digital pleasant and simple. It has a large LED display and can be controlled just as easily as any other IKA laboratory equipment.

### IKA Plate (RCT digital)

Ident. No. 0020014903



### RCT 5 digital

Ident. No. 0020002704

New: 850 W  
heating power



### C-MAG HS 7 control

Ident. No. 0020002694



reddot award 2017  
winner

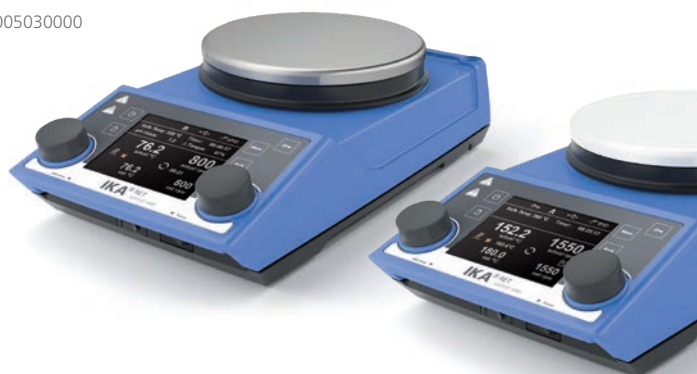
### RET control-visc

Ident. No. 0005020000

Weighing function  
& pH measurement

### RET control-visc white

Ident. No. 0005030000



TECHNICAL DATA	IKA PLATE (RCT DIGITAL)	RCT 5 DIGITAL	C-MAG HS 7 CONTROL	RET CONTROL-VISC   WHITE
Stirring quantity max. (H <sub>2</sub> O)	20 l	20 l	20 l	20 l
Direction of rotation	right   left	right   left	right   left	right
Speed range	50 – 1500 rpm	50 – 1500 rpm	50 – 1500 rpm	50 – 1700 rpm
Heat output	600 W	850 W	1000 W	600 W
Heating temperature range	RT + device self heating – 310 °C	RT + device self heating – 310 °C	RT + device self heating – 500 °C	RT + device self heating – 340 °C
Set-up plate material	Aluminium alloy	Aluminium with ceramic coating	Ceramic	Stainless steel 1.4301 I Coated
Load capacity weighing function max.	–	–	–	5 kg
Set-up plate dimensions	Ø 135 mm	137 × 137 mm	180 × 180 mm	Ø 135 mm
Dimensions (W × H × D)	160 × 85 × 270 mm	160 × 85 × 270 mm	220 × 88 × 354 mm	160 × 85 × 270 mm
Protection class according to DIN EN 60529	IP 42	IP 42	IP 21	IP 42

# MAGNETIC STIRRERS | With Heating

① C-MAG HS 4 digital

Ident. No. 0025001025

② C-MAG HS 7 digital

Ident. No. 0025004645

③ C-MAG HS 10 digital

Ident. No. 0025001026



① C-MAG HS 4

Ident. No. 0003581000

② C-MAG HS 7

Ident. No. 0003581200

③ C-MAG HS 10

Ident. No. 0003581400



① RH basic

Ident. No. 0005019700

② RH basic white

Ident. No. 0005029700

③ RH basic 2

Ident. No. 0003339000



① RH digital

Ident. No. 0005019800

② RH digital white

Ident. No. 0004678000



TECHNICAL DATA	C-MAG HS 4   7   10 DIGITAL	C-MAG HS 4   7   10	RH BASIC   BASIC WHITE   RH BASIC 2	RH DIGITAL   DIGITAL WHITE
Stirring quantity max. (H <sub>2</sub> O)	5 l   10 l   15 l	5 l   10 l   15 l	15 l   10 l	15 l
Speed range	100 – 1500 rpm	100 – 1500 rpm	100 – 2000 rpm	100 – 2000 rpm
Heat output	250 W   1000 W   1500 W	250 W   1000 W   1500 W	600 W   400 W	600 W
Heating temperature	50 – 500 °C	50 – 500 °C	50 – 320 °C Room temp. °C – 320 °C	50 – 320 °C
Set-up plate material	Ceramic	Ceramic	Stainless steel 1.4301 RH basic white: coated	Stainless steel 1.4301 RH digital white: coated
External Temperature control	PT 1000	–   ETS-D5   ETS-D5	ETS-D5   ETS-D5   –	ETS-D5
Dimensions (W x H x D)	150 x 105 x 260 mm 215 x 105 x 330 mm 300 x 105 x 415 mm	150 x 105 x 260 mm 220 x 105 x 335 mm 300 x 105 x 415 mm	160 x 100 x 250 mm 168 x 105 x 220 mm	160 x 100 x 250 mm
Protection class according to DIN EN 60529	IP 21	IP 21	IP 21	IP 21

### RET basic

Ident. No. 0003622000



### RCT basic

Ident. No. 0020002621

BESTSELLER



#### ① RT 5

Ident. No. 0003690600

#### ② RT 10

Ident. No. 0003691100

#### ③ RT 15

Ident. No. 0003692600

10-position hotplate  
stirrer, for synchronous  
heating and stirring


## RCT BASIC

### /// Integrated safety

RCT basic fulfills, in all areas, the required safety regulations for laboratory equipment. The device is monitoring all safety relevant components and therefore is suitable for unsupervised operation. Safety is guaranteed in the event of malfunctions.

Further safety features are an adjustable safety circuit, two independent control circuits, hot top indicator and precise temperature control.

TECHNICAL DATA	RET BASIC	RCT BASIC	RT 5   RT 10   RT 15
Stirring quantity max. (H <sub>2</sub> O)	20 l	20 l	0.4 l per stirring position
Speed range	50 – 1700 rpm	50 – 1500 rpm	0 – 1000 rpm
Heat output	600 W	600 W	175 W   375 W   580 W
Heating temperature	RT + device self heating – 340 °C	RT + device self heating – 310 °C	Room temp. °C – 120 °C
Set-up plate material	Stainless steel 1.4301	Aluminium alloy	Aluminium alloy
Connection for ext. temperature sensor	PT 1000	PT 1000	–
Dimensions (W x H x D)	160 x 95 x 270 mm	160 x 85 x 270 mm	120 x 60 x 610 mm 190 x 60 x 610 mm 280 x 60 x 610 mm
Protection class according to DIN EN 60529	IP 42	IP 42	IP 40

## ① RO 5

Ident. No. 0003690500

## ② RO 10

Ident. No. 0003691000

## ③ RO 15

Ident. No. 0003692500

Adjustable  
reverse operation

## KMO 3 basic

Ident. No. 0020004631

Illuminated, flat  
stirring plate

## ① Midi MR 1 digital

Ident. No. 0025002968

## ② Maxi MR 1 digital

Ident. No. 0025002978

## ① C-MAG MS 4

Ident. No. 0003582200

## ② C-MAG MS 7

Ident. No. 0003582400

## ③ C-MAG MS 10

Ident. No. 0003582600



## TECHNICAL DATA

## RO 5 | RO 10 | RO 15

## KMO 3 BASIC

MIDI MR 1 DIGITAL |  
MAXI MR 1 DIGITAL

## C-MAG MS 4 | 7 | 10

Stirring quantity max. (H<sub>2</sub>O)

0.4 l per stirring position

5 l

50 l | 150 l

5 l | 10 l | 15 l

Speed range

0 – 1200 rpm

10 – 1500 rpm

0 – 1000 rpm  
0 – 600 rpm

100 – 1500 rpm

Set-up plate material

Stainless steel 1.4301

Glass

Stainless steel 1.4301

Ceramic

Set-up plate dimensions

120 × 470 mm  
190 × 470 mm  
280 × 470 mm

140 × 120 mm

350 × 350 mm  
500 × 500 mm100 × 100 mm  
180 × 180 mm  
260 × 260 mm

Dimensions (W × H × D)

120 × 60 × 570 mm  
190 × 60 × 570 mm  
280 × 60 × 570 mm

153 × 62,5 × 227 mm

360 × 110 × 430 mm  
505 × 110 × 585 mm150 × 105 × 260 mm  
220 × 105 × 335 mm  
300 × 105 × 415 mmProtection class according to  
DIN EN 60529

IP 40

IP 42

IP 21

IP 21



### topolino

Ident. No. 0003368000



### IKA myPlate

Ident. No. 0025006950



### lab disc

Ident. No. 0020011935



### Mini MR standard

Ident. No. 0025004132



TECHNICAL DATA	TOPOLINO	IKA MYPLATE	LAB DISC	MINI MR STANDARD
Stirring quantity max. (H <sub>2</sub> O)	0.25 l	1.5 l	0.8 l	1 l
Direction of rotation	–	Left	–	Right
Speed range	500 – 1800 rpm	100 – 2500 rpm	15 – 1500 rpm	0 – 2500 rpm
Set-up plate material	Synthetic (PP)	Glass	Polyester	Polyester
Set-up plate dimensions	Ø 80 mm	Ø 135 mm	Ø 100 mm	115 × 115 mm
Dimensions (W × H × D)	95 × 37 × 115 mm	152 × 30 × 164 mm	116 × 12 × 175 mm	115 × 37 × 129 mm
Protection class according to DIN EN 60529	IP 21	IP 54	IP 65	IP 42



Product	Ident. No.
---------	------------

TEMPERATURE SENSORS

Stainless steel

PT 1000.60	0003516800
PT 1000.80	0004443000
PT 100.70	0020000440

Glass-coated

PT 1000.70	0003736000
PT 100.51	0002600300

SafeCoat (PFA, PTFE)

PT 1000.90	0004480600
PT 100.53	0004499700

Dual

PT 1000.50	0003367600
PT 1000.51	0003377700

ELECTRONIC CONTACT THERMOMETERS

ETS-D5	0003378000
ETS-D6	0003378100

SENSORS FOR ETS-D5 / ETS-D6

H 62.51	0002735451
H 66.51, glass coated	0002735551
H 66.53, coated	0004499900
H 70, extension cable	0002735600



RET control-visc	RET basic	IKA Plate (RCT digital)	RCT basic	C-MAG HS 7 control	C-MAG HS digital 4   7   10	C-MAG HS 7   10	RH digital   basic
-	•	•	•	•	•	-	-
-	+	+	+	+	+	-	-
•	-	-	-	-	-	-	-
-	+	+	+	+	+	-	-
+	-	-	-	-	-	-	-
-	+	+	+	+	+	-	-
+	-	-	-	-	-	-	-
+	-	-	-	-	-	-	-
-	+	+	+	+	-	+	+
-	+	+	+	+	-	+	+

+ Compatible | - Not compatible | • Included in delivery





Product	Hole Ø	Dimensions	Ident. No.
---------	--------	------------	------------

#### DRY HEATING BLOCK SQUARE SERIES



Square carrier with handle:  
H 135.11

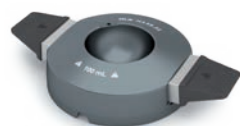


H 135.104

H 135.10 Square carrier without handle	—	160 × 160 mm	0025000832
H 135.11 Square carrier with handle	—	160 × 160 mm	0004448200
H 135.101 Block 16 × 4 ml	15.2 mm	79 × 79 mm	0025000626
H 135.102 Block 16 × 8 ml	17.5 mm	79 × 79 mm	0025000627
H 135.103 Block 9 × 16 ml	20.5 mm	79 × 79 mm	0025000628
H 135.104 Block 4 × 20 ml	28.5 mm	79 × 79 mm	0025000629
H 135.105 Block 4 × 30 ml	28.5 mm	79 × 79 mm	0025000630
H 135.106 Block 4 × 40 ml	28.5 mm	79 × 79 mm	0025000631
H 135.107 Block 100 ml	—	79 × 79 mm	0025000632
H 135.108 Block 250 ml	—	79 × 79 mm	0025000633

Product	Max. outer Ø	Inner Ø	Ident. No.
---------	--------------	---------	------------

#### 100 ML FLASK HEATING BLOCK SERIES



Flask carrier with handle:  
H 135.21



Flask carrier without  
handle: H 135.25

H 135.20 Flask carrier 100 ml without handle	142 mm	—	0025000634
H 135.21 Flask carrier 100 ml with handle	142 mm	—	0004448300
H 135.201 Flask inlay 10 ml	—	33.8 mm	0025000636
H 135.202 Flask inlay 25 ml	—	43.8 mm	0025000637
H 135.203 Flask inlay 50 ml	—	52.8 mm	0025000638

#### 250 ML FLASK HEATING BLOCK SERIES

H 135.25 Flask carrier 250 ml without handle	142 mm	—	0025003280
H 135.26 Flask carrier 250 ml with handle	142 mm	—	0020007954

#### 500 ML FLASK HEATING BLOCK SERIES



Inlay: H 135.301

H 135.30 Flask carrier 500 ml without handle	142 mm	—	0025000639
H 135.31 Flask carrier 500 ml with handle	142 mm	—	0004448400
H 135.301 Flask inlay 100 ml	—	66.3 mm	0025000641
H 135.302 Flask inlay 250 ml	—	88 mm	0025000642

#### 1000 ML FLASK HEATING BLOCK SERIES



Inlay: H 135.401

H 135.40 Flask carrier 1000 ml without handle	166.3 mm	—	0025000833
H 135.41 Flask carrier 1000 ml with handle	166.3 mm	—	0004448500
H 135.401 Flask inlay 500 ml	—	108 mm	0025000644

#### 2000 ML FLASK HEATING BLOCK SERIES



Inlay: H 135.501

H 135.50 Flask carrier 2000 ml without handle	194.7 mm	—	0025000834
H 135.51 Flask carrier 2000 ml with handle	194.7 mm	—	0004448600
H 135.501 Flask inlay 1000 ml	—	131.8 mm	0025000645

Product	Dimensions	Ident. No.
---------	------------	------------

## IKAFLON® ROUND PTFE-COATED

10 round (5 pcs.)	10 × 6 mm	0004488600
15 round (5 pcs.)	15 × 6 mm	0004488700
20 round (5 pcs.)	20 × 8 mm	0004488800
25 round (5 pcs.)	25 × 8 mm	0004488900
30 round (5 pcs.)	30 × 8 mm	0004489000
40 round (5 pcs.)	40 × 8 mm	0004489100
50 round (5 pcs.)	50 × 8 mm	0004489200
80 round (5 pcs.)	80 × 10 mm	0004489300
110 round (1 pc.)	108 × 27 mm	0000793300
155 round (1 pc.)	153 × 27 mm	0001129000

## IKAFLON® ROUND GLASS-COATED

25 round (5 pcs.)	25 × 6 mm	0004492200
40 round (5 pcs.)	40 × 8 mm	0004492600
50 round (5 pcs.)	50 × 8 mm	0004492800

## IKAFLON® SLIDE ROUND

25 slide (5 pcs.)	25 × 6 mm	0004493800
30 slide (5 pcs.)	30 × 6 mm	0004494000
40 slide (5 pcs.)	40 × 8 mm	0004494200
50 slide (5 pcs.)	50 × 8 mm	0004494400

## IKAFLON® POWER

20 power (5 pcs.)	20 × 6 mm	0004493000
30 power (5 pcs.)	30 × 6 mm	0004493200
50 power (5 pcs.)	50 × 8 mm	0004493400

## IKAFLON® ELLIPSE PTFE-COATED

20 ellipse (5 pcs.)	20 × 10 mm	0004494600
25 ellipse (5 pcs.)	25 × 12 mm	0004494800
30 ellipse (5 pcs.)	32 × 16 mm	0004495000
35 ellipse (5 pcs.)	35 × 15 mm	0004495200
40 ellipse (5 pcs.)	40 × 20 mm	0004495400
50 ellipse (5 pcs.)	50 × 20 mm	0004495600
70 ellipse (5 pcs.)	70 × 20 mm	0004496000

Product	Dimensions	Ident. No.
---------	------------	------------

## IKAFLON® CROSS PTFE-COATED

10 cross (5 pcs.)	10 × 10 mm	0004496200
20 cross (5 pcs.)	20 × 20 mm	0004496400
25 cross (5 pcs.)	25 × 25 mm	0004496600
30 cross (5 pcs.)	30 × 30 mm	0004496800
38 cross (5 pcs.)	38 × 38 mm	0004497000

## IKAFLON® BONE PTFE-COATED

37 bone (5 pcs.)	35 × 8 × 20 mm	0004497200
54 bone (5 pcs.)	55 × 8 × 20 mm	0004497400

## IKAFLON® BEAKER PTFE-COATED

74 (1 pc.)	(Ø × H): 74 × 29 mm with 60 × 9	0004497800
------------	---------------------------------------	------------

## IKAFLON® CROWN PTFE-COATED

9 crown (5 pcs.)	9 × 6 mm	0004498400
------------------	----------	------------

## TRIKA® PTFE-COATED

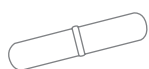
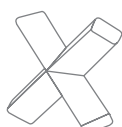
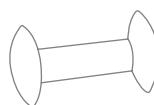
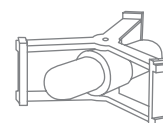
25 Trika (5 pcs.)	25 × 8 mm	0004499300
35 Trika (5 pcs.)	35 × 9 mm	0004499400
55 Trika (5 pcs.)	55 × 14 mm	0004499500
80 Trika (5 pcs.)	80 × 17 mm	0004499600

## SET OF MAGNETIC STIRRING BARS

RS 1		0001358600
RS 2		0004499100

## STIRRING BAR REMOVER

RSE	Stirring bar remover	0001293100
-----	----------------------	------------

IKAFLON® round  
PTFE-coatedIKAFLON® ellipse  
PTFE-coatedIKAFLON® cross  
PTFE-coatedIKAFLON® bone  
PTFE-coatedIKAFLON® beaker  
PTFE-coated

TRIKA® PTFE-coated



WiCo RET control-visc



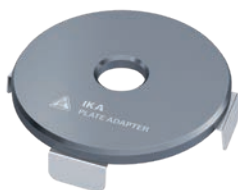
Cover RET control-visc



IB R RO 15 eco



LABLIFT m



IKA Plate Adapter

Product	Description	Ident. No.
<b>WIRELESS-CONTROLLED OPERATING UNIT</b>		
WiCo RET control-visc	Wireless remote control	0020007259
<b>COVERS</b>		
H 102	Cover for RH basic	0004281600
H 103	Cover for RH digital	0004299100
H 100	Cover for RCT basic and RET basic	0003661000
H 104	Cover for RET control-visc	0004209500
<b>MAINS CABLES</b>		
H 11	Mains cable Euro plug	0001091500
H 11	Mains cable USA plug	0003564500
H 11	Mains cable UK plug	0002410700
H 11	Mains cable CH plug	0001091600
H 11	Mains cable IN plug	0003923600
<b>PLASTIC BATH FOR MAGNETIC STIRRER RO 15</b>		
IB R RO 15 eco	Plastic bath, size L, 25 l volume	0020006341
<b>LABLIFT</b>		
LABLIFT m	Up to 25 kg (max. static load)	0004022400
<b>IKA PLATE ADAPTER</b>		
IKA Plate Adapter	Heating block adapter for RCT 5 digital, C-MAG 7 and 10	0025001022
<b>BEAKER CAP</b>		
BC 1000	Beaker cap	0020003417



H 3000



Product	Description	Ident. No.
---------	-------------	------------

#### OIL BATH ATTACHMENTS

H 29	Oil bath attachment, 1 l	0002829400
H 30	Oil bath attachment, 1.5 l	0002829500

#### BEAKERS, STAINLESS STEEL

H 1000	Beaker, stainless steel, 1 l	0004444401
H 1500	Beaker, stainless steel, 1.5 l	0004444501
H 3000	Beaker, stainless steel, 3 l	0004444503
H 5000	Beaker, stainless steel, 5 l	0004444505

#### HEATING JACKETS

HG 600	Heating jacket for beaker 600 ml	0020003416
HG 1000	Heating jacket for beaker 1000 ml	0020003415



HG 600

#### HOLDERS

H 16 V	Support rod	0001545100
H 16.3	Extension for support rod	0025000622
H 44	Boss head clamp	0002437700
H 38	Holding rod	0003547700



H 16.3



H 44



#### LABORATORY SOFTWARE

##### labworldsoft® 6 Starter

Ident. No. 0020019397

##### labworldsoft® 6 Pro

Ident. No. 0020017366

labworldsoft® is a laboratory software to control lab devices, automate processes, and to document your measurements and results. The software provides access to a huge library of different laboratory devices. labworldsoft® does not integrate only IKA laboratory devices, but supports several other devices from different manufacturers as well. You stay flexible in the choice of your lab devices you want to use and profit from the whole device range of the laboratory world.